

FOR IMMEDIATE RELEASE

June 12, 2026

Contact: Shannon Egan, Executive Director, Dickinson College Galleries

717-245-1709 | egansh@dickinson.edu

The Trout Gallery Celebrates America250 with New Exhibition

Recent Acquisitions: American Stories

CARLISLE, PA — To commemorate the 250th anniversary of the signing of the Declaration of Independence, The Trout Gallery at Dickinson College presents *Recent Acquisitions: American Stories*, an exhibition celebrating recent additions to the Gallery's permanent collection with a particular focus on American artists. American stories are as diverse as the nation itself—pushing beyond borders and inviting new opportunities for connection across artworks, artists, and communities. At this pivotal moment in our nation's history, the Gallery seeks to celebrate a variety of American artistic voices.

The exhibition runs **June 12 through September 26, 2026**. All events, programs, and exhibitions are always free and open to the public.

Public Events:

Summer Community Day: July 5, 2026, 10am-2pm

Join The Trout Gallery for art activities, story time, exhibition tours, a scavenger hunt, face-painting, snacks, prizes, and more!

Pizza on the Plaza: September 4, 2026, 5-7pm

Help us celebrate our current exhibitions by enjoying free pizza made by the Dickinson College farm and served on Weiss Plaza.

Featured Works:

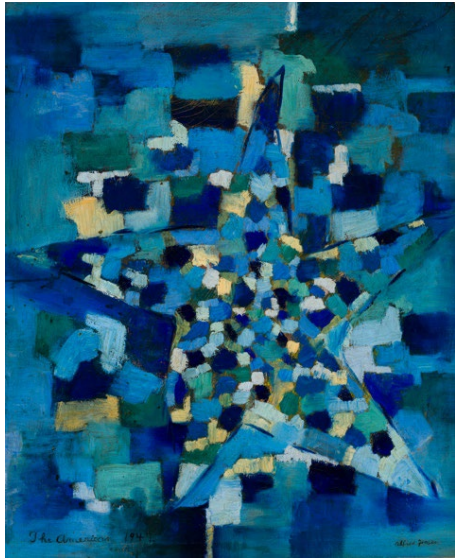
Roberto Lugo's (American, born 1981) ceramic teapot *Ain't I* (2025) offers a striking portrait of nineteenth-century abolitionist Sojourner Truth. Born to Puerto Rican parents, Lugo consistently addresses themes of racial injustice and inequality through social activism, poetry, education, and art. His ceramics contrast traditional European and Asian forms with portraits of underrepresented figures in fine and decorative arts.

Maria Martinez (San Ildefonso Pueblo, 1887–1980) and **Julian Martinez** (San Ildefonso Pueblo, 1879–1943) are represented by a *Black on Black Jar* (1939) decorated with abstracted shapes evoking natural motifs—bird feathers, trees, mountains. Through technical mastery and creative vision, Maria led a revival of



traditional pottery techniques, collaborating with her husband for decades. Their extensive body of ceramic work reflects a modernist, innovative approach to traditional practice.

Notations (2008) by **Lorna Simpson** (American, born 1960) comprises 25 still photographs drawn from the artist's films. The work features female characters of color in interwoven, fragmented storylines, presenting its subjects not as passive objects of desire but as strong protagonists.



The American (1947) by **Alfred Jensen** (American, born Guatemala, 1903–1981) reflects the artist's lifelong interest in how one hue affects the vibrancy and perception of another. Jensen worked and exhibited alongside major Abstract Expressionist painters of his generation—including Mark Rothko and Willem de Kooning—before arriving at his signature paintings of brightly colored squares evoking numeric systems, symbolic diagrams, and calendric grids.

These works, alongside many others on display, offer glimpses into the lives of diverse American artists and the traditions, histories, and communities that inspired them. Ultimately, *Recent Acquisitions: American Stories* demonstrates how works of art mirror, complicate, and unite the varied experiences that shape American identity.

Other artists in the exhibition include Grace Arnold Albee, Romare Bearden, Thomas Hart Benton, Minna Citron, Mark Dion, Melvin Edwards, Audrey Flack, the Guerrilla Girls, David Humphrey, David Itchkawich, Lida Moser, Cindy Sherman, and John Sloan.

Image captions:

[above] Roberto Lugo (American, born 1981), *Ain't I*, 2025, glazed stoneware. Purchase of the Friends of The Trout Gallery, 2026.3.1-b.

[below] Alfred Jensen (American, born Guatemala, 1903-1981), *The American*, 1947, oil on canvas. Gift of Mark B. Goldstein, Class of 1984, 2025.31.

About The Trout Gallery:

The Trout Gallery, the art museum of Dickinson College is always free and open to the public. Located in the Emil R. Weiss Center for the Arts at 240 West High Street, Carlisle, Pennsylvania 17013, the Gallery promotes curiosity, collaboration, and understanding through active engagement with communities, ideas, and artworks. Through exhibitions, collections, and educational programming, it fosters interdisciplinary exploration and offers dynamic experiences that advance creativity, expression, global diversity, and social justice.

Hours: Monday–Saturday, 10am–4pm | **Admission:** Free

Website: www.troutgallery.org | **Social:** @troutgallery (Facebook & Instagram)



For information about America250PA events and historical activities in Cumberland County throughout 2026, visit <https://www.visitcumberlandvalley.com/explore/america-250/>

###